


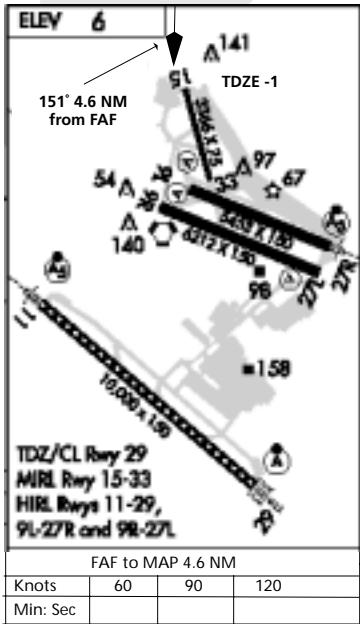
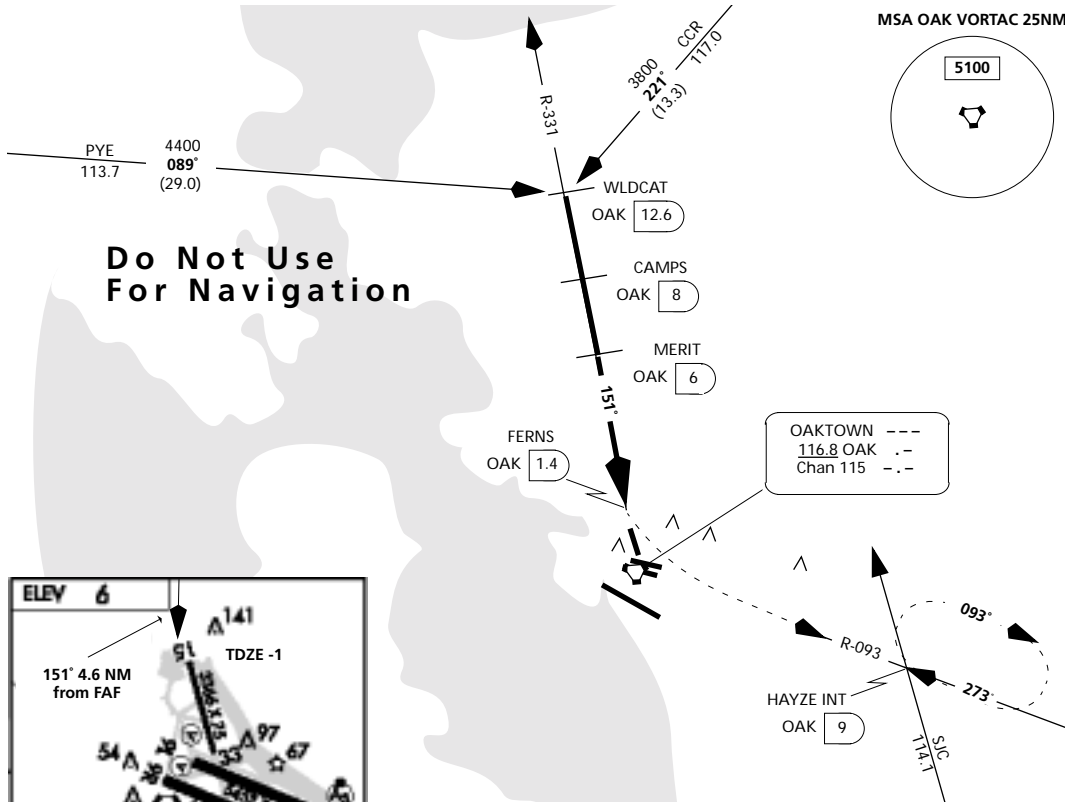
OAKTOWN, CALIFORNIA

OY-123(FAA)

VORTAC OAK <b>116.8</b> Chan 115	APP CRS <b>151°</b>	Rwy Idg <b>3366</b> TDZE -1 Apt Elev <b>6</b>
--	------------------------	--

**VOR/DME RWY 15**  
OAKTOWN/METROPOLITAN OAKTOWN INTL (OAK)

 MISSED APPROACH: Climbing left turn to 4800 via OAK R-093 to HAYZE Int/OAK 9 DME and hold.			
ATIS 133.775	NORCAL APP CON 135.4 310.8 354.1	OAKTOWN TOWER (Rwys 9-27, 15-33) (Rwy 11-29) 118.3 291.65 127.2 256.9	GND CON (Rwys 9-27, 15-33) (Rwy 11-29) 118.3 291.65 127.2 256.9
			CLNC DEL 121.1



	WLDCCAT OAK 12.6	CAMPS OAK 8	MERIT OAK 6	FERNS OAK 1.4	HAYZE INT OAK 9
	3200	2400	1600	4800	OAK R-093
	Procedure Turn N/A				
	4.6 NM		2 NM	4.6 NM	0.4
CATEGORY	A	B	C	D	
S-15	420 -1	421(500-1)	450-1 1/4 451 (500-1 1/4)	N/A	
CIRCLING	520 -1 514 (600 -1)	540 -1 534 (600 -1)	540 -1 1/2 534 (600-1 1/2)	N/A	

OAKTOWN, CALIFORNIA

OAKTOWN/METROPOLITAN OAKTOWN INTL (OAK)

Orig 03303

37°43'N-122°13'W

**VOR/DME RWY 15**