

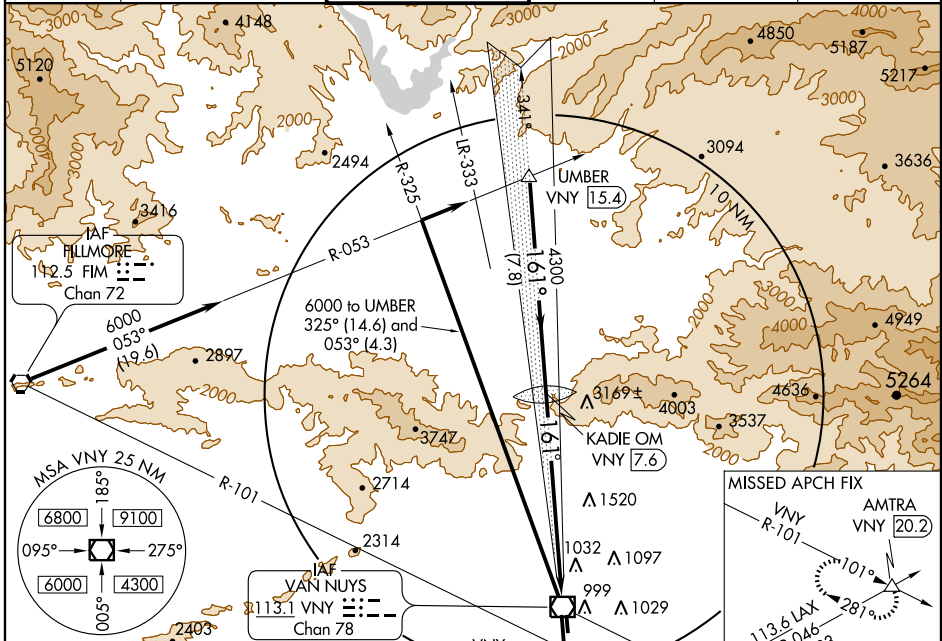
ILS RWY 16R

VAN NUYS (VNY)

LOC I-VNY 111.3	APP CRS 161°	Rwy ldg 6570 TDZE 790 Apt Elev 799
---------------------------	------------------------	--

<p>Inoperative table does not apply.</p>	<p>MALSR</p>	<p>MISSED APPROACH: Climb to cross VNY 1.5 DME or FIM R-101 at or below 1750, then climbing left turn to 4000 via VNY R-101 to AMTRA INT and hold.</p>

ATIS 118.45	SOCAL APP CON 120.4 360.6 (NORTH) 134.2 338.2 (WEST)	VAN NUYS TOWER* 119.3 (CTAF) 0 239.0	GND CON 121.7	CLNC DEL 126.6 239.0	UNICOM 122.95
-----------------------	--	--	-------------------------	--------------------------------	-------------------------



SW-3, 05 JUL 2007 to 02 AUG 2007

SW-3, 05 JUL 2007 to 02 AUG 2007

ELEV 799

Rwy 16R ldg 6570'
Rwy 16L Rwy 2580'

161° 8.1 NM from FAF

TDZE 790

HIRL Rwy 16R-34L
MIRL Rwy 16L-34R
REIL Rwy 34R

FAF to MAP 8.1 NM

Knots	60	90	120	150	180
Min:Sec	8:06	5:24	4:03	3:14	2:42

LOCALIZER I-VNY 111.3

Procedure Turn NA

UMBER INT VNY 15.4

KADIE OM VNY 7.6

GS 3.90° TCH 55*

*Displaced threshold.

CATEGORY	A	B	C	D
S-ILS 16R	1040- $\frac{3}{4}$ 250 (300- $\frac{3}{4}$)		1090- $\frac{3}{4}$ 300 (300- $\frac{3}{4}$)	1140-1 350 (400-1)
CIRCLING	1300-1 501 (600-1)		1340-1 $\frac{1}{2}$ 541 (600-1 $\frac{1}{2}$)	1360-2 561 (600-2)

APPROACH NOT AUTHORIZED WHEN GUIDE SLOPE NOT USED