

LOC RWY 36L

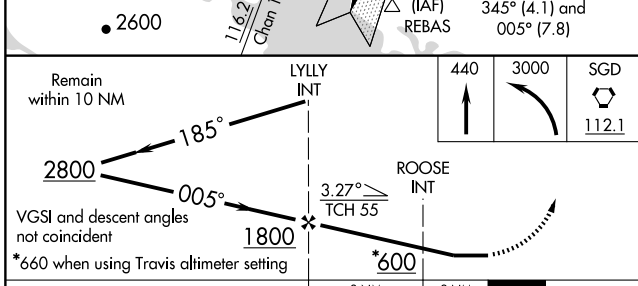
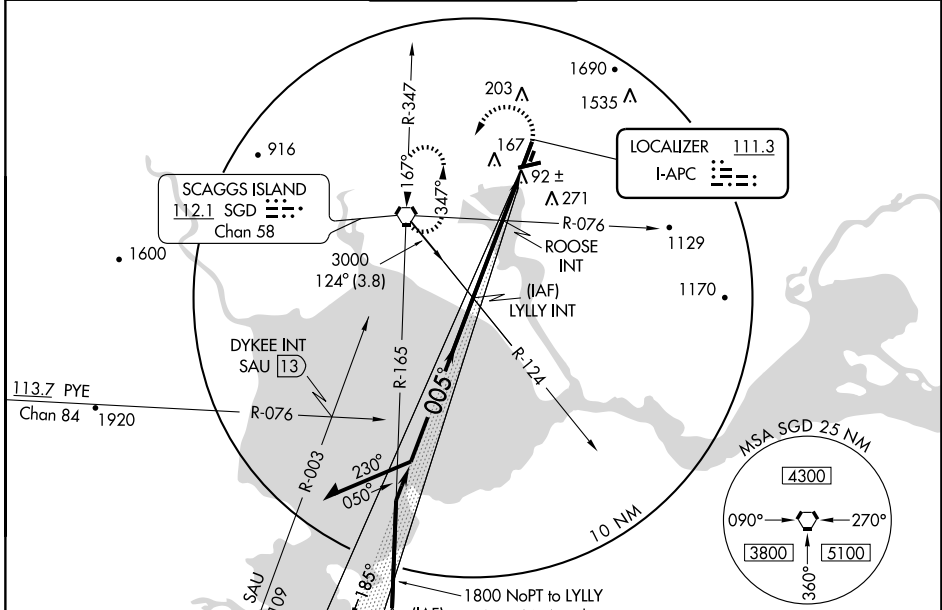
NAPA COUNTY (APC)

LOC I-APC 111.3	APP CRS 005°	Rwy Idg 5931
		TDZE 14
		Apt Elev 33

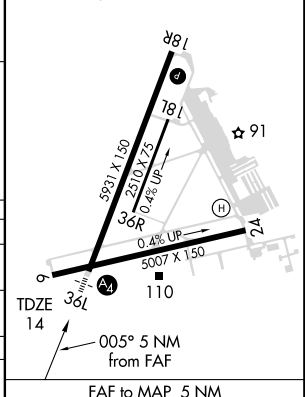
▼ When control tower closed, use Travis AFB altimeter setting and increase all MDAs 60 feet.
 ▲ Circling not authorized northeast of Rwy 18R and 24.
 †† Inoperative table does not apply to MALS for Cat. D.
 † Inoperative table does not apply to MALS for Cat. C & D.

MALS
 MISSED APPROACH: Climb to 440, then climbing left turn to 3000 direct SGD VORTAC and hold.

ATIS 124.05	OAKLAND CENTER 127.8 353.5	NAPA TOWER* 118.7 (CTAF) 257.8	GND CON 121.7	CLNC DEL 127.85
-----------------------	--------------------------------------	--	-------------------------	---------------------------



ELEV 33
MIRL Rwy 6-24 and 18R-36L
REIL Rwy 6



CATEGORY	A	B	C	D
S-LOC 36L†	600-¾	586 (600-¾)	600-1½	600-1¾
CIRCLING	600-1	620-1	620-1½	1140-3
	567 (600-1)	587 (600-1)	587 (600-1½)	1107 (1200-3)
ROOSE MINIMUMS				
S-LOC 36L††	360-¾		346 (400-¾)	360-1¼
				346 (400-1¼)
CIRCLING	600-1	620-1	620-1½	1140-3
	567 (600-1)	587 (600-1)	587 (600-1½)	1107 (1200-3)

Knots	60	90	120	150	180
Min:Sec	5:00	3:20	2:30	2:00	1:40

SW-2, 02 JUL 2009 to 30 JUL 2009

SW-2, 02 JUL 2009 to 30 JUL 2009