

ASPEN, COLORADO

AL-5889 (FAA)

# LOC/DME-E

ASPEN-PITKIN COUNTY/SARDY FIELD (ASE)

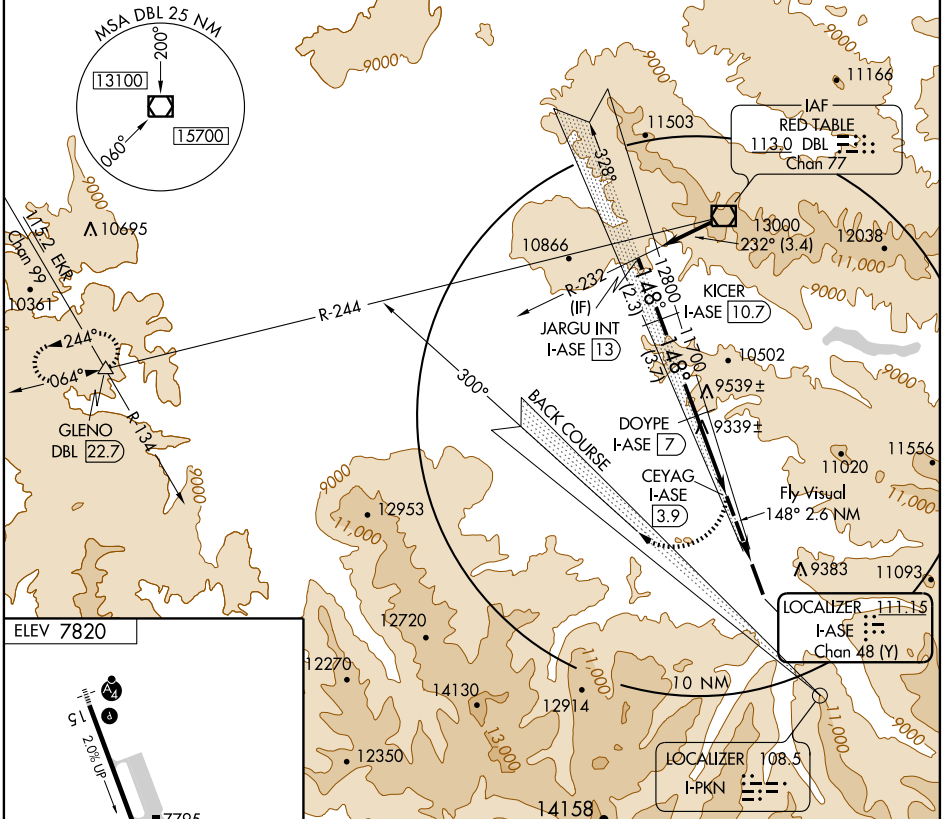
LOC/DME I-ASE <b>111.15</b> Chan <b>48 (Y)</b>	APP CRS <b>148°</b>	Rwy Idg TDZE Apt Elev <b>N/A</b> <b>N/A</b> <b>7820</b>
--	------------------------	---

**NA** Procedure not authorized at night.

MISSED APPROACH: Climbing right turn to 14000 via heading 300° to intercept and proceed via I-PKN northwest course (300°) and DBL VOR/DME R-244 to GLENO INT/DBL 22.7 DME and hold.

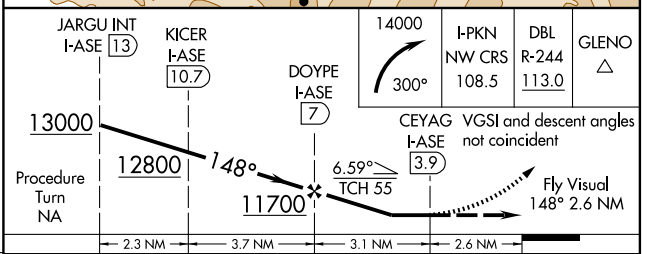
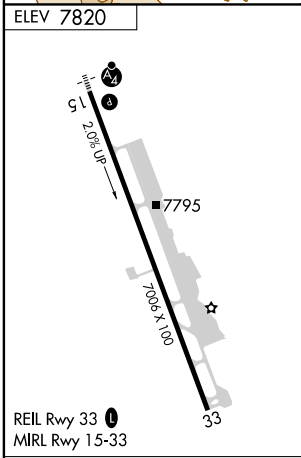
ATIS <b>120.4</b>	ASPEN APP CON* <b>123.8 288.3</b>	ASPEN TOWER* <b>118.85 (CTAF) 288.3</b>	GND CON <b>121.9</b>	CLNC DEL <b>123.75</b>	UNICOM <b>122.95</b>
----------------------	--------------------------------------	--	-------------------------	---------------------------	-------------------------

Procedure NA for arrival on DBL VOR/DME airway radials Q93° CW 297°.



SW-1, 18 DEC 2008 to 15 JAN 2009

SW-1, 18 DEC 2008 to 15 JAN 2009



CATEGORY	A	B	C	D
CIRCLING	9840-3 2020 (2100-3)	9940-3 2120 (2200-3)	10140-3 2320 (2400-3)	NA

ASPEN, COLORADO  
Orig 06103

ASPEN-PITKIN COUNTY/SARDY FIELD (ASE)  
39°13'N-106°52'W  
**LOC/DME-E**