

RNAV (GPS) Y RWY 12

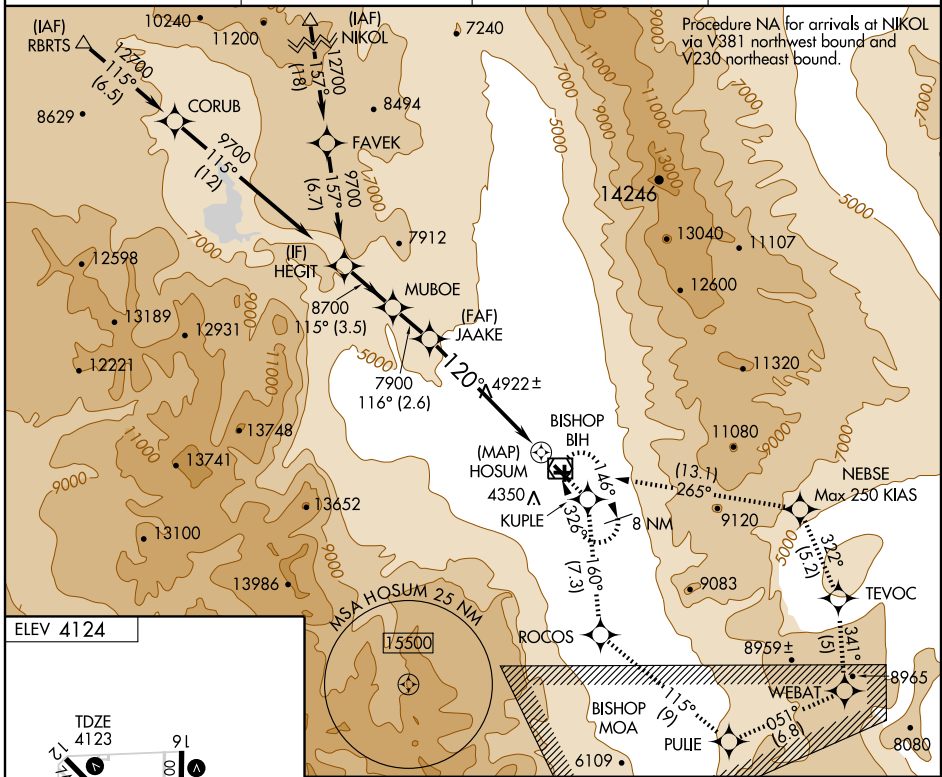
BISHOP/ EASTERN SIERRA RGNL (BIH)

APP CRS	Rwy Idg	7498
120°	TDZE	4123
	Apt Elev	4124

⚠ When local altimeter setting not received, procedure NA.
⚠ Visibility reduction by helicopters NA.
 DME/DME RNP-0.3 NA

MISSED APPROACH: (Do not exceed 250 KIAS until NEBSE)
 Climb to 13000 direct KUPLE, and 160° track to ROCOS, and 115° track to PULIE, and 051° track to WEBAT, and 341° track to TEVOC, and 322° track to NEBSE, and 265° track to BIH VOR/DME and hold.

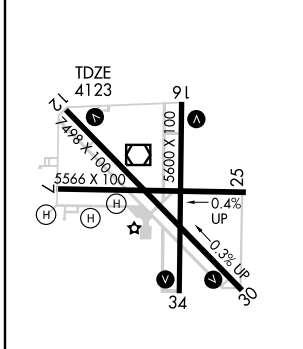
ASOS 119.025	OAKLAND CENTER 125.75 284.65	RIVERSIDE RADIO 122.6	UNICOM 123.0 (CTAF) 0
------------------------	--	---------------------------------	--



SW-2, 18 DEC 2008 to 15 JAN 2009

SW-2, 18 DEC 2008 to 15 JAN 2009

ELEV 4124



MIRL Rwy 7-25 0
HIRL Rwy 12-30 and 16-34 0

VGSI and descent angles not coincident.

HEGIT	MUBOE	JAAKE	HOSUM
9700	8700	7900	
115°	116°	120°	
3.5 NM	2.6 NM	8.5 NM	1 NM
6600-1¼ 2477 (2500-1¼)	6600-1½ 2477 (2500-1½)	6600-3 2477 (2500-3)	NA
6600-1¼ 2476 (2500-1¼)	6600-1½ 2476 (2500-1½)	6600-3 2476 (2500-3)	NA