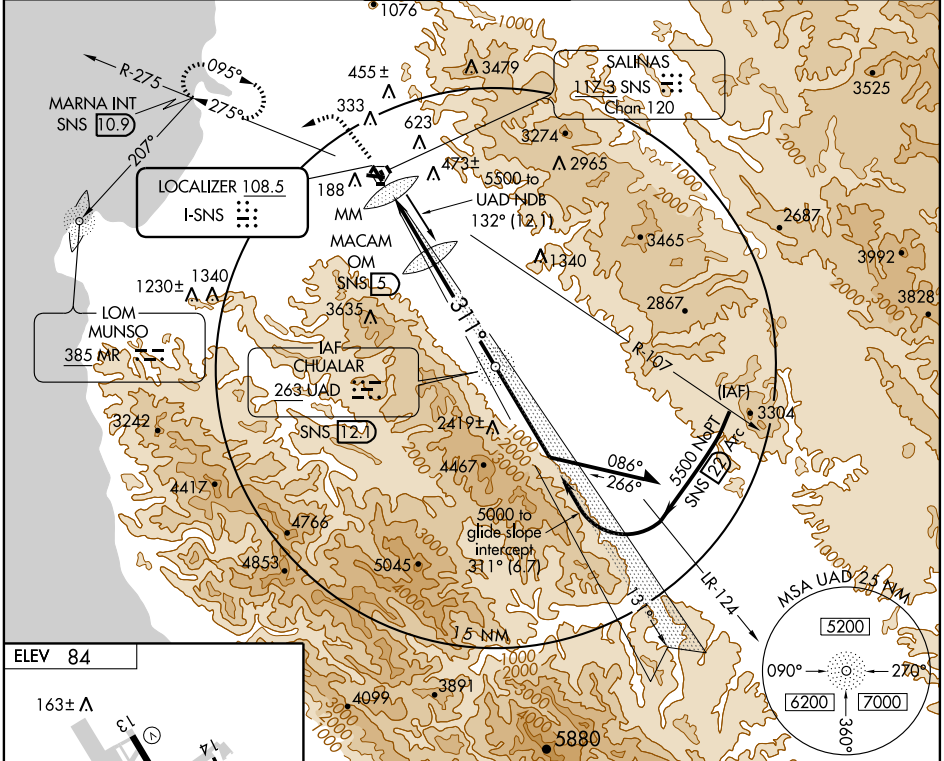


ILS RWY 31
SALINAS MUNI (SNS)

LOC I-SNS 108.5	APP CRS 311°	Rwy Idg TDZE Apt Elev	4825 79 84
---------------------------	------------------------	-----------------------------	---------------------------------------

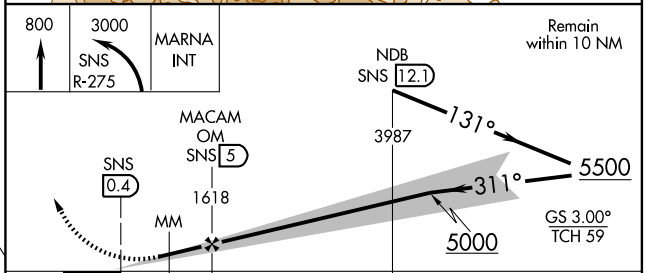
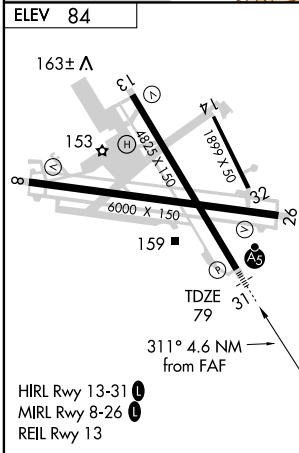
MALSR
 MISSED APPROACH: Climb to 800 then climbing left turn to 3000 via SNS R-275 to MARNA Int/10.9 DME and hold.

ATIS 124.85	NORCAL APP CON 133.0 251.15	SALINAS TOWER* 119.4 (CTAF) 0 239.3	GND CON 121.7	UNICOM 122.95
-----------------------	---------------------------------------	---	-------------------------	-------------------------



SW-2,14 APR 2005

SW-2,14 APR 2005



CATEGORY	A	B	C	D
S-ILS 31	279/24 200 (200-½)			
S-LOC 31	When glide slope not used, use LOC/DME Rwy 31 Procedure			
CIRCLING	560-1 476 (500-1)	580-1 496 (500-1)	580-1½ 496 (500-1½)	780-2¼ 696 (700-2¼)