

# LDA RWY 6

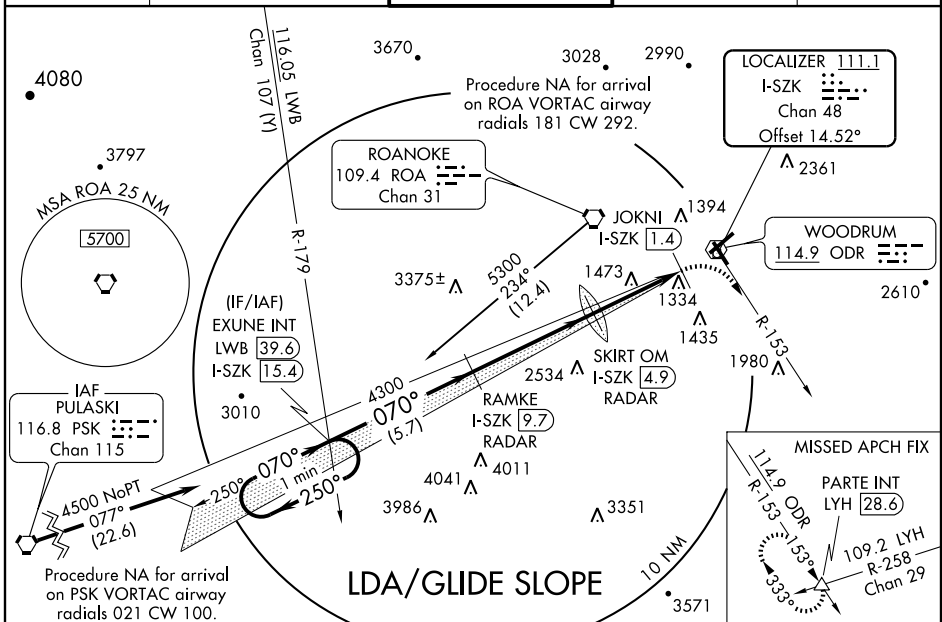
ROANOKE RGNL/WOODRUM FIELD (ROA)

LOC/DME I-SZK <b>111.1</b> Chan <b>48</b>	APP CRS <b>070°</b>	Rwy ldg <b>6800</b> TDZE <b>1175</b> Apt Elev <b>1175</b>
---	------------------------	---

Circling NA NW of Rwy 6-24. Circling NA to Rwy 15.  
 RADAR or DME REQUIRED. Inoperative table does not apply to S-LDA-6. SKIRT MINIMUMS: For inoperative MALSR increase S-LDA-6 Cats A and B to 1½ and Cat C visibility to ¾. When VGSF inop, straight-in/circling Rwy 6 procedure NA at night.

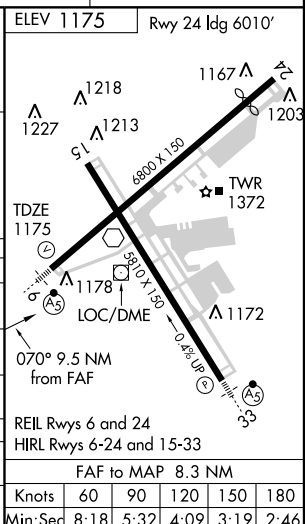
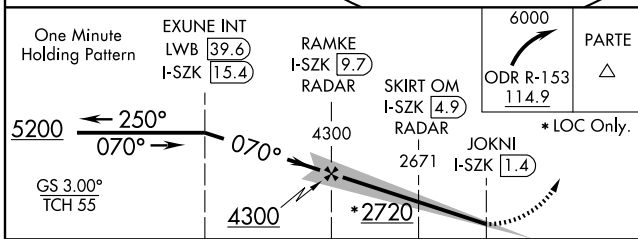
MALSR 
 MISSED APPROACH:  
 Climbing right turn to 6000 via ODR R-153 to PARTE Int/LYH 28.6 DME and hold.

ATIS <b>134.95</b>	ROANOKE APP CON <b>126.9 339.8</b>	ROANOKE TOWER <b>118.3 257.8</b>	GND CON <b>121.9 257.8</b>	CLNC DEL <b>119.7</b>
-----------------------	---------------------------------------	-------------------------------------	-------------------------------	--------------------------



NE-3, 18 DEC 2008 to 15 JAN 2009

NE-3, 18 DEC 2008 to 15 JAN 2009



CATEGORY	A	B	C	D
S-LDA/GS 6	1580-1		405 (500-1)	
S-LDA 6	2720-1½	1545 (1600-1½)	2720-3	1545 (1600-3)
CIRCLING	2720-1½	1545 (1600-1½)	2720-3	1545 (1600-3)
SKIRT OM/DME/RADAR				
S-LDA 6	1780-1	605 (700-1)	1780-1¼ 605 (700-1¼)	1780-1½ 605 (700-1½)
CIRCLING	1780-1½	605 (700-1½)	1780-1¾ 605 (700-1¾)	1780-2 605 (700-2)

# LDA RWY 6