

OAKLAND, CALIFORNIA

AL-294 (FAA)

| | | | |
|--|------------------------|-----------------------------|-------------------------------------|
| WAAS CH 72700 W27A | APP CRS 276° | Rwy Idg TDZE Apt Elev | 6212 9 9 |
|--|------------------------|-----------------------------|-------------------------------------|

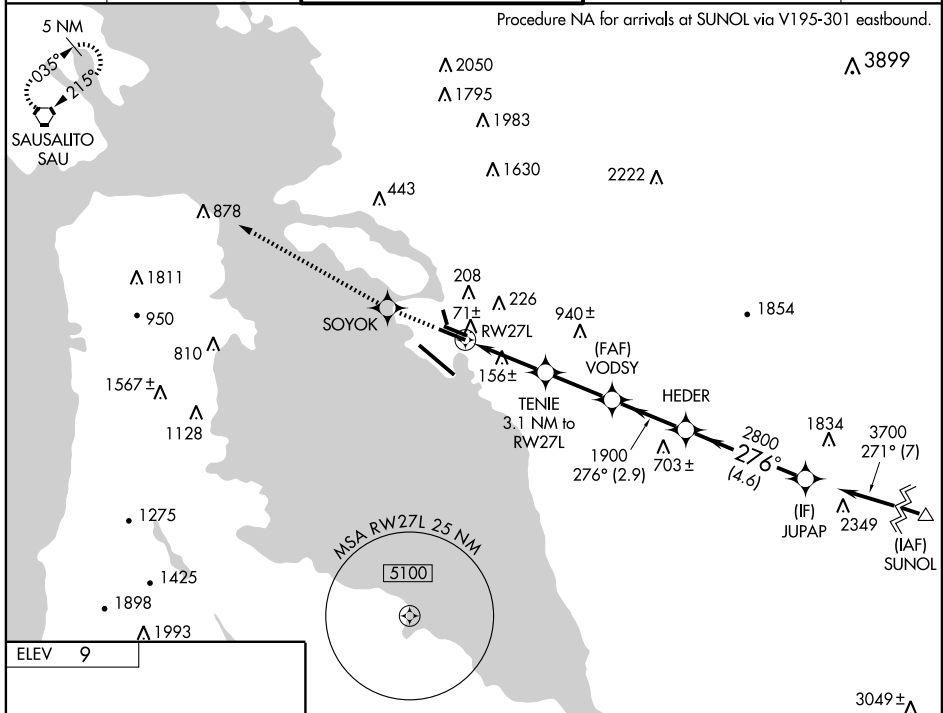
RNAV (GPS) RWY 27L

OAKLAND/METROPOLITAN OAKLAND INTL (OAK)

▼ For uncompensated Baro-VNAV systems, LNAV/VNAV NA below -15°C (5°F) or above 49°C (120°F) DME/DME RNP -0.3 NA.

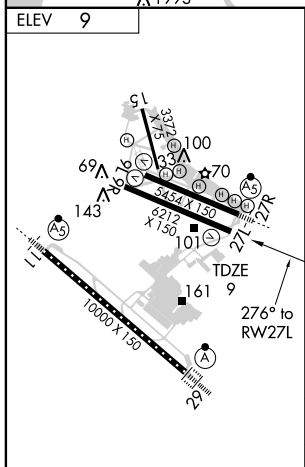
MISSED APPROACH: Climb to 4000 direct SOYOK then via 283° track to SAU VORTAC and hold, continue climb-in-hold to 4000.

| | | | | |
|------------------------|---|--|--|--------------------------|
| ATIS 133.775 | NORCAL APP CON 125.35 310.8 354.1 | OAKLAND TOWER (Rwys 9-27, 15-33) (Rwy 11-29) 118.3 291.65 127.2 256.9 | GND CON (Rwys 9-27, 15-33) (Rwy 11-29) 121.9 121.75 | CLNC DEL 121.1 |
|------------------------|---|--|--|--------------------------|

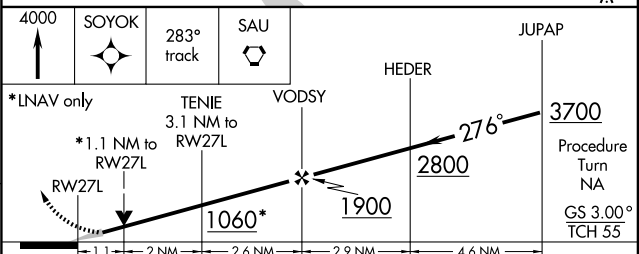


SW-2, 27 SEP 2007 to 25 OCT 2007

SW-2, 27 SEP 2007 to 25 OCT 2007



TDZ/CL Rwy 29
MIRL Rwy 15-33
HIRL Rwys 11-29, 9L-27R, and 9R-27L



| CATEGORY | A | B | C | D |
|--------------|--------------|--------------|--------------|--------------|
| LPV DA | | 259/40 | 250 (300-¾) | |
| LNAV/VNAV DA | | 359/60 | 350 (400-1¼) | |
| LNAV MDA | 420/50 | 411 (500-1) | 420/60 | 411 (500-1¼) |
| CIRCLING | 520-1¼ | 540-1¼ | 540-1½ | 560-2 |
| | 511 (600-1¼) | 531 (600-1¼) | 531 (600-1½) | 551 (600-2) |

OAKLAND, CALIFORNIA
Amdt 1 07074

OAKLAND/METROPOLITAN OAKLAND INTL (OAK)
37°43'N-122°13'W
RNAV (GPS) RWY 27L